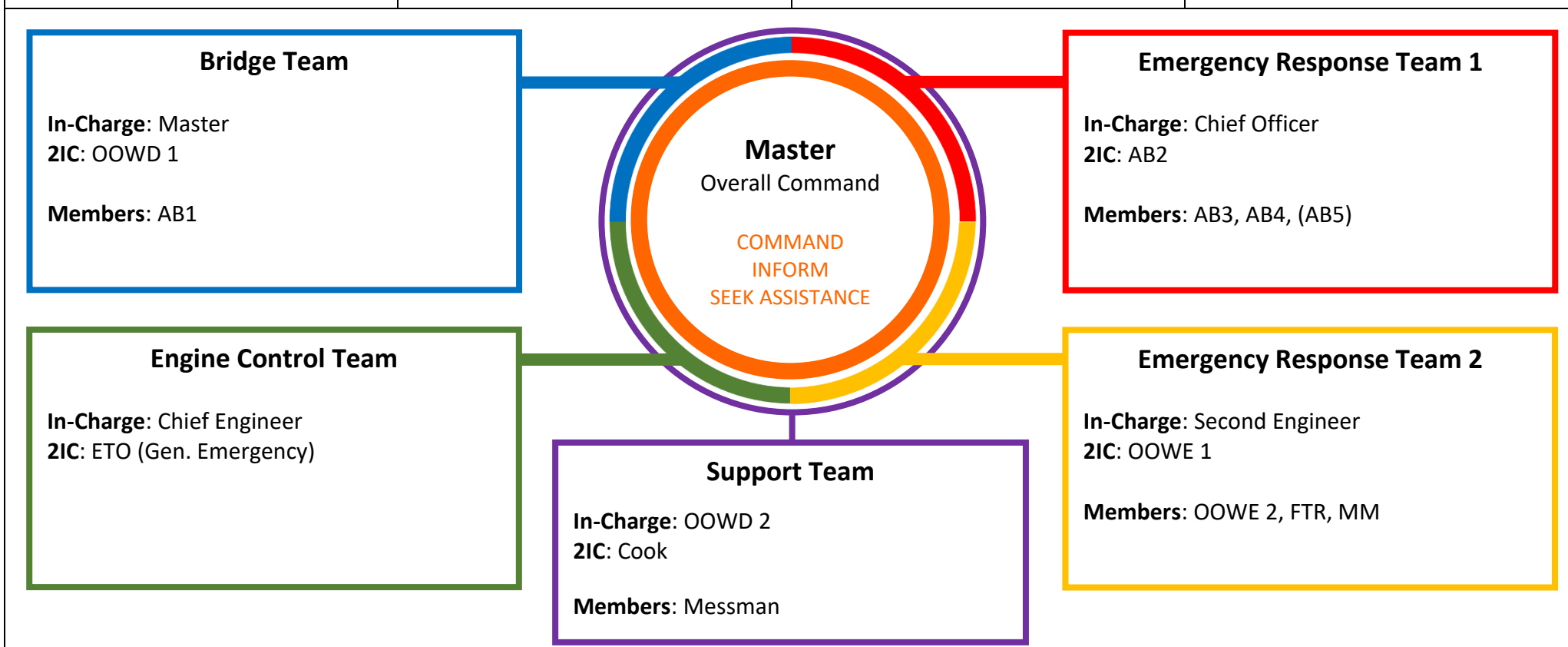


EMERGENCY RESPONSE PLAN

This is a general plan which describes the overall emergency response organization on the ship. It does not cover every emergency situation and is meant to supplement ship-specific emergency instructions and procedures.

<p>Collision / Flooding</p> <p>Response: All emergency teams.</p> <ul style="list-style-type: none"> Assess damage to affected spaces, report extent of damage to the Bridge. Check the integrity of adjacent spaces. Confirm stability of vessel. Check for casualties. Take steps to manage flooded compartments/ spaces. Assess risk of pollution and take prevention measures as/ when required. Collision: Where possible provide assistance to the other vessel. Assess the seaworthiness of the vessel. 	<p>Fire</p> <p>Response: All emergency teams.</p> <ul style="list-style-type: none"> On discovering a fire, sound the alarm immediately and notify as many people in the area as possible (eg. by shouting "Fire, Fire, Fire", banging on doors etc.). If the fire is anything other than a small fire which can be safely tackled with a fire extinguisher or fire blanket, leave the scene immediately and close all doors to limit the spread of the fire. Assess the nature and extent of fire as well as the best method of attack. Emergency Teams are to don fire-fighting equipment and muster at a safe and appropriate staging point. Consider a distress/ urgency call and notify relevant authorities. Assess fire risk to adjacent spaces and prepare to boundary cool. Once fire extinguished, consider risk of flare-ups and continue cooling. 	<p>Man Overboard</p> <p>Response: All emergency teams.</p> <ul style="list-style-type: none"> Inform the Bridge immediately. Take steps to mark the location, throw lifebuoy/ floating materials. Keep a close watch until lookouts are in place who are in constant contact with the Bridge Prepare boats for rescue/ recovery. Perform appropriate recovery manoeuvre based on the prevailing conditions and circumstances. All teams to prepare for and assist in recover operations. Provide first aid to survivors. If person cannot be located immediately, consider distress call and notify relevant authorities. 	<p>Pollution</p> <p>Response: All emergency teams.</p> <ul style="list-style-type: none"> Stop all operations which are causing pollution to occur. Sound the general alarm. Inform the Master. Take steps to identify the source of the pollution and the required safety precautions. Contain polluting materials onboard. Contain pollution which has made its way to the sea to prevent it from spreading. Avoid concentrations of dangerous fumes, take appropriate precautions. <p>Materials for responding to a pollution emergency are located:</p> <div style="border: 1px solid black; height: 30px; width: 100%;"></div>
---	--	--	---



<p>Enclosed Space Rescue</p> <p>Response: ERT1, ERT2.</p> <ul style="list-style-type: none"> Inform the Bridge. Inform the Master. Prepare rescue equipment at an appropriate, safe staging point. Rescue team to don breathing equipment and standby team to be made ready. Agree on communications. Provide additional ventilation to the compartment affected whenever possible. After recovery, remove the patient to a safe location for first aid assessment and treatment. <p>Rescue equipment is located:</p> <div style="border: 1px solid black; height: 30px; width: 100%;"></div>	<p>Serious Injury</p> <p>Response: Med. Off., Support Team.</p> <ul style="list-style-type: none"> Inform the Duty Officer. Inform the Medical Officer. Before moving the patient, assess extent and type of injuries. If moving could cause further harm (eg. following a back/ neck injury), the patient should be left in place until assess by the medical officer and arrangements made for safe transfer. However, if there is immediate risk of further harm/ injury then the patient should be moved to safety immediately. Nominated medical officer is to assess if medical advice and/or evacuation is needed. <p>The Nominated Medical Officer is:</p> <div style="border: 1px solid black; height: 30px; width: 100%;"></div>	<p>Rescue by Helicopter</p> <p>Response: Bridge Team, ERT1.</p> <ul style="list-style-type: none"> Prepare the helicopter winching/ landing area, ensure it is free of obstructions and properly illuminated. Prepare fire-fighting and cutting equipment in the vicinity of the operations area. ET1 to be standing by to operate emergency equipment as required. Establish radio communications with the helicopter and establish operating plan and instructions. Establish desired course/ speed for the vessel. Never attach/ secure a helicopter cable or line to any part of the ship. Let winch lines touch the deck before touching them yourself. Rescue should be prioritized in order of immediate need. <p>On-Deck Coordinator: Chief Officer</p>	<p>Emergency Steering</p> <p>Response: Bridge Team, ERT1</p> <p>In the event of a steering system failure:</p> <ul style="list-style-type: none"> OOW to check all steering pumps and bridge steering modes to see if bridge steering can be re-established. Inform the Master. <p>If steering cannot be re-established:</p> <ul style="list-style-type: none"> Inform the engine room, bring vessel speed under control. Inform other vessels in the vicinity, check risks of collision. Slow down or if required, stop the vessel. Display Not Under Command lights and/ or shapes. Call ERT1 to man emergency steering position. Check communications between bridge and emergency steering position. Test emergency steering system and all indicators.
---	--	--	--

MUSTER LIST

In the event of an emergency, crew (other than Bridge Team and Engine Control Team) to muster at the Muster Station (A Deck, Stbd Aft).

Bridge Team to Muster on the Bridge.

Engine Control Team to Muster in the ECR.

ABANDON SHIP (VERBAL COMMAND)			FIRE AND GENERAL EMERGENCY (●●●●●● —————)		
	Team	Duties		Team	Duties
Master		In command.	Master	Bridge Team	In command.
CO		Second-in-command. In Charge Lifeboat.	OOWD 1		Navigation and communications.
OOWD 1		2IC Lifeboat. Collect GMDSS Radio, SART, EPIRB(s), Logbook	AB1		Assist as directed.
OOWD 2		In charge Port Raft. Launch raft as directed.	CO	Emergency Response Team 1	Second-in-command. In charge ERT 1. On scene command deck fire.
CE		Start lifeboat engine, assist as required.	AB 2		2IC ERT 1. Prepare hoses, entry control.
2E		In charge Starboard Raft. Launch raft as directed.	AB 3		Prepare hoses, assist as directed.
OOWE 1		Assist as directed.	AB 4		Don firemans outfit and assist as directed.
OOWE 2		Assist as directed.	AB 5		Don firemans outfit and assist as directed.
ETO		Disconnect lifeboat charging cable.	CE	Engine Control Team	In charge Engine Control Team
AB 1		Assist as directed.	ETO		2IC Engine Control Team. Assist as directed.
AB 2		Assist as directed.	2E	Emergency Response Team 2	In charge ERT 2. On scene command engine fire.
AB 3		Assist as directed.	OOWE 1		2IC ERT 2. Prepare hoses, entry control.
AB 4		Assist as directed.	OOWE 2		Prepare hoses, assist as directed.
AB 5		Assist as directed.	FTR		Don firemans outfit and assist as directed.
FTR		Assist as directed.	MTM		Don firemans outfit and assist as directed.
MTM		Assist as directed.	OOWD 2	Support Team	In charge Support Team. Assist as directed.
COOK		Collect blankets and provision as instructed.	COOK		2IC Support Team. Assist as directed.
MSM		Collect blankets and provision as instructed.	MSM		Assist as directed.
MAN OVERBOARD (—————)			POLLUTION EMERGENCY (●●●●●● —————)		
	Team	Duties		Team	Duties
Master	Bridge Team	In command.	Master	Bridge Team	In command.
OOWD 1		Navigation and communications.	OOWD 1		Navigation and communications.
AB 1		Assist as directed.	AB1		Assist as directed.
OOWD 2	Rescue Boat Team	In charge boat team.	CO	Emergency Response Team	Second-in-Command. Assist as directed.
OOWE 1		2IC Rescue boat team.	AB 2		Assist as directed.
AB 2		Assist as directed.	AB 3		Assist as directed.
CO	Emergency Response Team 1	Second-in-Command. In charge emergency team1.	AB 4		Assist as directed.
AB 3		2IC launch team. Assist as directed. Lookout.	AB 5		Assist as directed.
AB 4		Assist as directed. Lookout.	CE		In charge emergency team.
AB 5		Assist as directed. Lookout.	ETO		Assist as directed.
OOWE 2	Emergency Response Team 2	In charge emergency team 2. Assist as directed. Lookout.	2E		2IC Emergency Team. Assist as directed.
MTM		2IC emergency team 2. Assist as directed. Lookout.	OOWE 1		Man engine room if required. Assist as directed.
FTR		Assist as directed. Lookout.	OOWE 2		Assist as directed.
COOK	Support Team	In charge support team. Assist as directed.	FTR		Assist as directed.
MSM		Assist as directed.	MTM		Assist as directed.
CE	Engine Control Team	In charge engine control team.	OOWD 2		Assist as directed.
2E		2IC engine control team. Assist as directed.	COOK		Assist as directed.
ETO		Assist as directed.	MSM		Assist as directed.